

Member Handbook 2009



Mission Statement

To perpetuate and preserve the art of
Hawaiian canoe paddling through
personal growth and character
development rooted in traditional
Hawaiian cultural values.

**Hawaiian Kamali‘i Inc. dba Hawaiian Canoe Club
Member Handbook 2009**

Table of Contents

Foundation

Mission Statement	Inside front cover
Ka ‘Ohana.....	2
‘O.H.A.N.A.	3
Hawaiian Canoe Club History.....	4 & 5
The Kamali‘i Program.....	6
Greening Up the Hale Program.....	7

Organization

Flow Chart.....	8
Board of Directors & Executive Director.....	9
Coaching Staff & Coaches Kuleana.....	10
‘Ohana Kuleana & Member Kuleana.....	11
General Rules & Procedures.....	11

Finances

2008 Income & Expense Report.....	12 & 13
Budget.....	14
Membership Dues & Benefits.....	15

Paddling & Culture

Wa‘a Names.....	16 & 17
HCC Sponsored Events.....	18
Race Schedule.....	19
Resources & Terminology.....	20
Chants & Songs.....	21, 22, 23, 24, & Inside back cover

Ka 'Ohana

'Ohana has always been the foundation of Hawaiian society and culture. In a traditional setting, a family is bound together in blood and spirit, with unquestioned commitment to each other and to the 'ohana as an institution. Any institution possessing such strength in unity will not hesitate to embark on the most hazardous of journeys in pursuit of the loftiest of goals.

What is it then that makes up an 'ohana? While the common design of the nuclear family is comprised of father, mother and children, the extended family will also include aunts, uncles, cousins and close family friends. There are keiki, makua and the most precious kupuna. There is a structure, and there is an organized hierarchy. There is strength in numbers and there is mana in being family, the 'ohana nui.

We at Hawaiian Canoe Club make up a huge 'ohana nui. We have evolved from a membership of ten or so, who in the 1960s paddled exclusively in koa canoes. Throughout the years, our membership has swelled to numbers in the hundreds, and our hale has become the envy of canoe clubs throughout the country. Our fleet of fiberglass and koa canoes is as large and as state-of-the-art as any in the state. Our board of directors and our coaching staff are dedicated and well organized. In 2001, we became the first Maui club to win a state title. In 2002 we became the first neighbor island club to win back-to-back titles

To review our club's record of winning and our inventory of equipment may cause many to think that there is no more to do, that we've done it all and have all we could possibly need. This is exactly the kind of thinking that would allow us to settle in mediocrity and complacency. To exist in this manner would be against the very nature of the Hawaiian. It is the nature of Hawaiians to sail beyond horizons, pushing the envelope of exploration and discovery. Hawaiian Canoe Club will always kulia i ka nu'u, strive for the summit. In or out of the water, HCC will continue to make headlines, but we can't do it without you.

Our most precious resource is not made of concrete, fiberglass, or koa. The hearts, minds, and muscles of each individual member will always be the critical component of satisfaction and success.

‘O ‘Oia‘i‘o genuine, sincere, truth

H Ha‘aha‘a humility

A Aloha friendship, love

N Na‘au pono right-minded, upright, just

A Alaka‘i lead, guide, direct

Hawaiian Canoe Club History

John M. Lake was serving a Commodore of Ma'alea Boat and Fishing Club in 1960 when he organized Hawaiian Canoe Club with 25 other charter members of Hawaiian ancestry. Canoe racing using flat-bottom boats was added to the high-power boat races taking place between the two piers in Kahului Harbor.

John M. Lake originally obtained the rough-shaped log for a koa canoe in 1952 from George Hendriques of Kohala, Hawai'i Island. He worked on building the canoe in the late 1950s for Ma'alea Boat and Fishing Club. In 1961, he purchased and refurnished the canoes. At the Lake's home in Olowalu, it was christened Kokololio—Swift Winds of Waikapu—and became Hawaiian Canoe Club's first canoe.

The club continued to grow, with about three quarters of the membership being keiki. Funds were raised by the sale of kulolo and laulau, catering lu'au, and community support. The number of canoe clubs on Maui and participation in regattas kept growing. HCC facilitated this growth by loaning canoes to other clubs, even loaning Kokololio to Kahului Canoe Club for a number of years.

Hawaiian Canoe Club participated in its first state regatta in 1962. Crews were blended with paddler from Hawaiian, Lahaina, and Kahului canoe clubs. HCC's first gold medal at the State Championship was won in 1984 by the 12 & Under Boys crew.

In 1967, HCC purchased its first fiberglass canoe. It was blessed and christened Keoni in honor of John M. Lake. Since then HCC has added over a dozen canoes to its fleet, most named after the ali'i of Maui or distinguished members of HCC.

In 1985 HCC won its first MCHCA Championship—a title won every year since. With a rapidly growing club, HCC leaders formalized their commitment to the keiki with the formation of the autonomous Hawaiian Kamali'i, Inc. which now serves hundred of keiki every summer through the Hawaiian Kamali'i Summer Enrichment Program. Keiki learn Hawaiian culture, oli, mele, hula, protocol, traditional food preparation, religion, navigation, and receive training in character building, leadership, and ocean safety.

Most recently, HCC has strung together an impressive line of HCRA State Championships winning in 1999, 2001, 2002, 2003, 2004, 2005, 2006, and 2007. This success is attributed in part to Pahili Kiu the koa canoe built by FafaToofa in 2002.

The Kamali'i Program

John M. Lake and Kealoha Lake, as police lieutenant and social worker respectively, were aware of Hawaiian children in the Maui community who could benefit from participation in canoe paddling and the canoe club. Because of the Lake's concern and care, keiki have always been an important focus of the club. The official Kamali'i Program was established in 1992.

There are three principal components of the Hawaiian Kamali'i program.

- ? The summer program serves 70 keiki ages 10 to 14. The seven-week program provides exposure to and participation in a number of important aspects of Hawaiian culture: language, taro cultivation, and paddling. This community service program is funded by grants from the County of Maui and by Hawaiian Canoe Club fundraising activities.
- ? The competitive paddling program runs from May until early August for more than 150 youth 8 to 18 years of age. Sessions include physical fitness, water safety, culture and history of paddling, and team paddling. This program has resulted in the Hawaiian Canoe Club Keiki Division's domination of state competition for the past several years. Scholastic tutoring is available for students before and after practice.
- ? The leadership program focuses on personal growth and character development with an aim to facilitate the transition to successful adulthood. Ocean-related activities within a positive, structured environment foster team building, self-esteem, and self-confidence using the concept of lokahi, which speaks of balance, harmony, and unity for the self in relationship to the body, mind, and spirit. This program serves keiki ages 9 to 18.

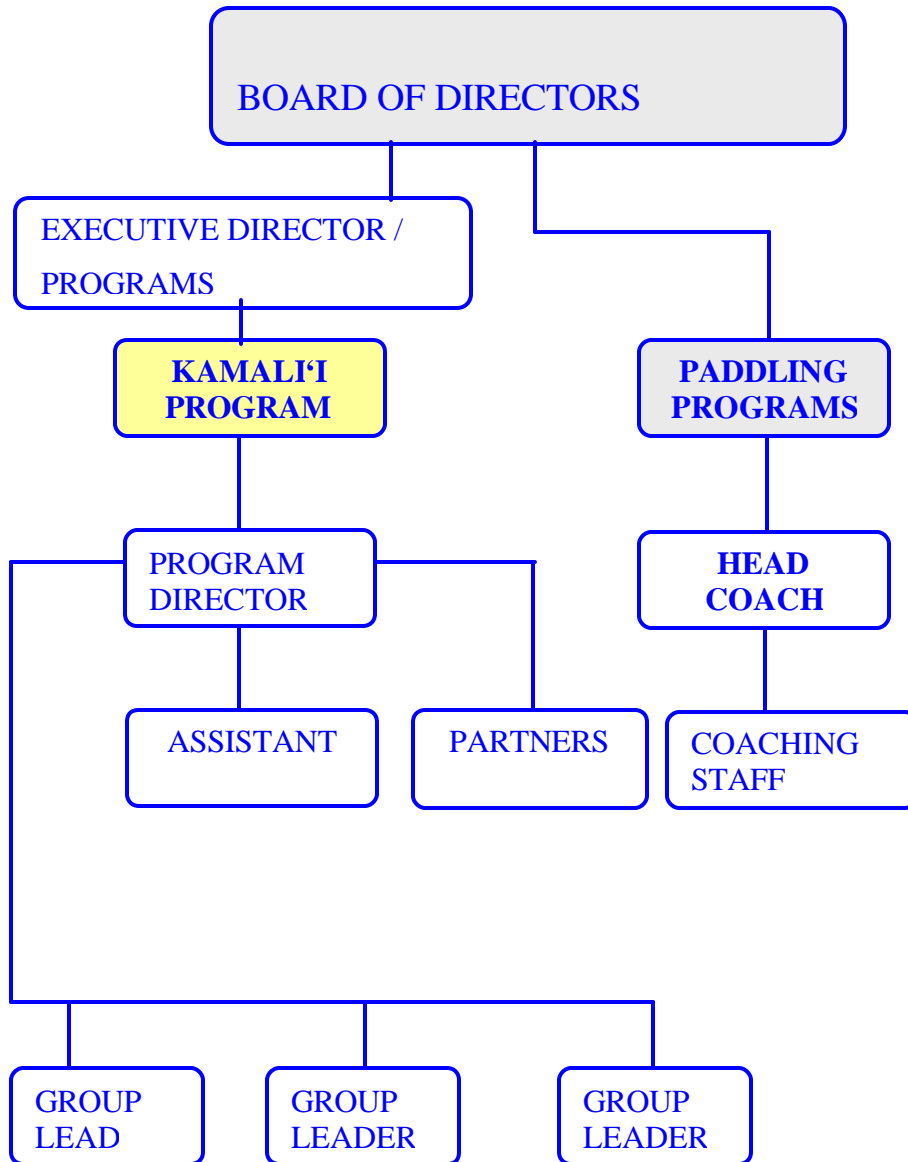
Greening Up the Hale

Because of Hawaiian Kamali'i's immense success and growth we were able to secure a grant from an anonymous donor to 'green-up' our hale. The goal of the Greening-Up the Hale Program is to increase awareness of our keiki on the benefits and practicality of energy conservation and renewable energy production. In May 2008 we installed a 4.2 kw photovoltaic system on our roof. Not only does this system offset energy costs for our programs, but it provides keiki real life experience with renewable energy.

The next steps in the process were related to energy conservation, awareness, and education. In September of 2008, our keiki, in conjunction with Maui Electric Company staff, discussed the importance of energy in our island community and produced a report listing energy-saving ideas for the facility including insulation, lighting, air circulation, and skylights.

Recently, we integrated these ideas while remodeling the hale's second floor. We insulated between interior and exterior walls with Icynene[®], a renewable-based insulation spray foam that creates a more energy-efficient and comfortable environment with air that is healthier to breathe. We overhauled our air conditioning system by installing three smaller but more efficient split system cooling units. We installed six skylights to take advantage of Maui's abundant trade winds and allow for more natural lighting.

During the final stages of the remodel we laid down flooring material made from 60% recycled products and installed compact fluorescent lights. We did all of this while maintaining the integrity of old appliances, windows, doors, and lights which were donated to the Habitat for Humanity Re-Use Store in Wailuku.



Board of Directors 2009-2010

President – Dave Ward

Vice President – JB Guard IV

Treasurer – Christopher Smith

Secretary – Leimana Spenser

Directors—Aron Brummel, Trez Harrison, Diane Ho, Barbara Querry, Patty Rycroft

Board of Directors Kuleana

- ? Set policy.
 - ? Approve budget.
 - ? Oversee Head Coach
 - ? Oversee Executive Director.
 - ? Deal with the concerns of the membership.
 - ? Abide by the by-laws.
 - ? Approve fundraising events.
 - ? Convene an annual meeting for the full membership.
 - ? Provide officials and representatives for MCHCA & HCRA.
-

Executive Director

Kaimana Lee

Executive Director Kuleana

- ? Report to the Board of Directors.
- ? Coordinate Kamali'i Program and after-school programs.
- ? Maintain bookkeeping records.
- ? Apply for, manage disbursement of , and complete final reports for grants.
- ? Prepare annual budget with Treasurer.
- ? Coordinate with fundraising committee chair.
- ? Represent the club at workshops and community meetings.
- ? Oversee the day-to-day management of the canoe club.
- ? Coordinate maintain of the hale, grounds, and equipment.
- ? Handle inventory control and sale of merchandise.

Coaching Staff

Head Coach	Diane L. Ho
Assistant Head Coach	Patty Rycroft
Technique Coach	Felipe Gomes
Keiki Division Head Coach	Paul Ka‘uahne Lu‘uwai
Assistant Keiki Coach	Kekupa‘a Nae‘ole
Men’s Division Head Coach	John McCandless
Assistant Men’s Coach	JB Guard
Novice B Men’s Coach	Aaron Brummel
40 Master Men’s Coach	John McCandless
50/55 Master Men’s Coach	Ron Williams
60 Master Men’s Coach	Paul Ka‘uahne Lu‘uwai
Women’s Division Head Coach	Dane Ward
Novice B Women’s Coach	Tim Lara
Novice A Women’s Coach	Tiare Lawrence
50/55/60 Women’s Coach	Paul Ka‘uahne Lu‘uwai

Coaches Kuleana

- ? Promote the cultural values of the club.
- ? Train and develop paddlers to their potential.
- ? Meet weekly to strategize and evaluate goals and objectives.
- ? Plan and organize day-to-day training workouts.
- ? Teach stroke technique.
- ? Teach steering and strength training and development of other skills.
- ? Coordinate crews for practice and races.
- ? Set crew evaluation criteria.

‘Ohana Kuleana

- ? Adults guide keiki by example.
- ? Keiki respect and listen to adults.
- ? Support keiki races.
- ? Participate in fundraisers.
- ? Take care of the equipment after practices and races.
- ? Take care of the hale, weight room, bathrooms, grounds, classrooms, and kitchen.
- ? Secure the hale—last to leave locks up.
- ? Contribute to club potlucks, parties, and fundraisers.

Member Kuleana

- ? Respect the coaches—they volunteer and commit their time to the club.
- ? Respect each other and the paddling community—competition is on the water only.
- ? Take responsibility for the hale, the equipment, and the grounds.
- ? Abide by club and association policies and rules.
- ? Meet club commitments and deadlines.
- ? Participate in club fundraisers and events.
- ? Keep up with all financial responsibilities.
- ? Arrive early for regattas.
- ? Abide by drug and alcohol policies.

General Rules & Procedures

- ? Stay outside red buoy zone when there is any movement by larger vessels.
- ? Respect and care for all club property & equipment.
- ? Keep the hale secure—the last person to leave locks up.
- ? Everyone who gets into a canoe must have signed a waiver.
- ? Paddlers must know how to swim.
- ? Make sure all canoes have bailers.
- ? Know what to do in the event of a huli.
- ? No surfing of canoes without coach permission.

HCC General Membership

Membership dues

- ? Adults: \$75 (non-paddling)
- ? Adults:\$60 (paddling regatta or long distance)
- ? Keiki: \$0 (free)

Membership benefits

- ? Eligible to participate in Recreational Paddling Program.
- ? One OC-1 storage spot for \$125/year. Subject to space availability.
- ? Free use of weight room.
- ? Free use of facilities for special events and meetings.
- ? Free HCC quarterly newsletters.

Membership Dues covers facility maintenance, facility repairs, utilities, property insurance, lease fees, taxes, administrative costs, and canoe repairs.

HCC Paddling Programs (Regatta and Long-Distance)

Regatta Program—due before the first regatta

- ? Adults: \$100
- ? Novice B: \$60
- ? Keiki: \$60
- ? Keiki with paying adult: \$30

Long-Distance Program—due before the first long-distance race

- ? Adult: \$100
- ? Keiki: \$100

Paddler Benefits

- ? Eligible to participate in all HCC paddling programs: recreational, regatta, long-distance.
- ? One OC-1 storage spot for \$125/year. Subject to space availability.
- ? Access to group and individual paddling coaching.
- ? Free use of weight room.
- ? Free use of facilities for special events and meetings.
- ? Free breakfast and lunch at every regular season regatta.
- ? Free HCC quarterly newsletters.

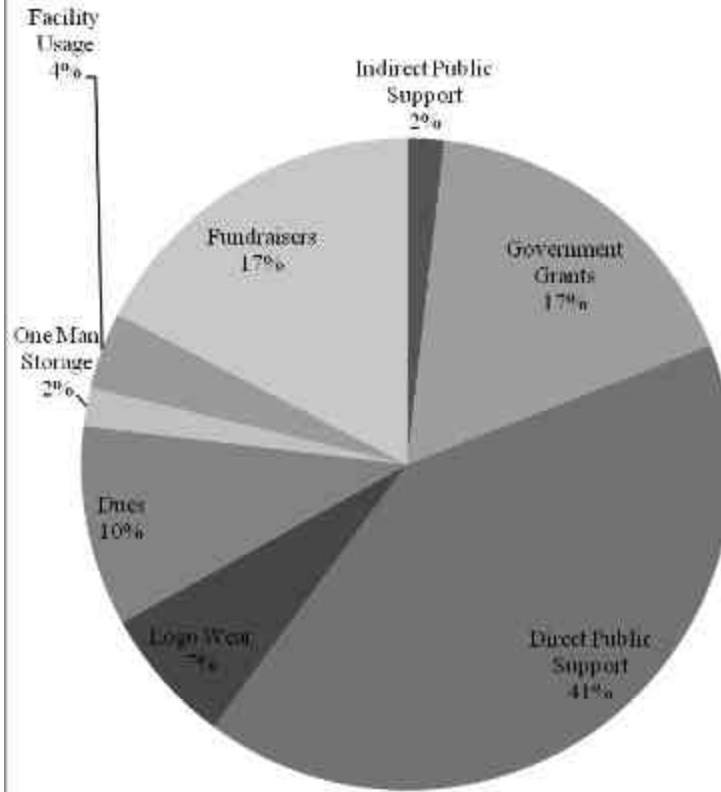
Regatta Program Dues generally cover canoe insurance, entry fees, HCRA/MCHCA membership fees, food at regattas, coaches' expenses, and other regatta expenses.

Ninety percent of Long-Distance Program Dues will go back towards the Long-Distance Program. The disbursement of these funds will be decided by long-distance paddlers.

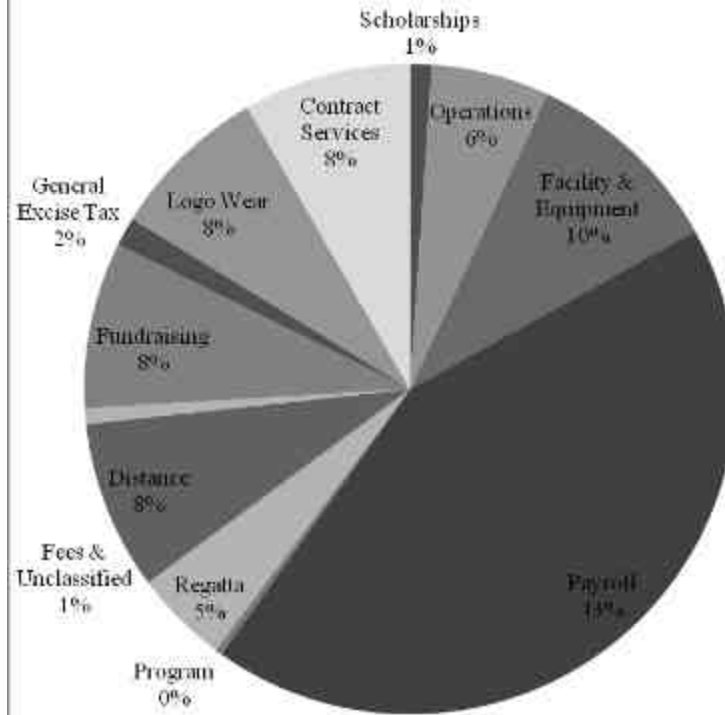
2009 Budget

INCOME	
Fundraisers	\$ 64,900
Fun In the Sun	\$ 20,000
John M. & Kealoha Lake Regatta	\$ 1,000
'Aha 'Aina	\$ 20,000
Dutchy Kino Race	\$ 3,000
Pailolo Challenge	\$ 5,400
Kalua Turkey Sale	\$ 2,500
Other Fundraisers & Donations	\$ 10,000
Logo Wear	\$ 3,000
Hui Malama	\$ 4,000
Alu Like Inc.	\$ 6,000
Kamali'i Excursion Fees	\$ 23,500
Membership Dues	\$ 10,000
Regatta Dues	\$ 15,000
Long Distance Dues	\$ 5,000
One Man Canoe Storage	\$ 5,500
Donations	\$ 10,000
Grants	\$ 15,000
Government Grants	\$ 20,000
Scholarships	\$ 2,500
TOTAL	\$ 181,400
EXPENSES	
Administration	\$ 19,350
Facility	\$ 15,905
General Insurance	\$ 6,000
Kamalii Program	\$ 23,325
Paddling/Coaching Equipment	\$ 5,500
Regatta Program	\$ 17,300
Long Distance	\$ 4,500
Salaries & Wages	\$ 83,750
Volunteer Recognition	\$ 2,000
Scholarships	\$ 2,500
TOTAL	\$ 180,130

Hawaiian Canoe Club 2008 Income



Hawaiian Canoe Club 2008 Expenses



Wa‘a Names

Kokololio—Koa--“Swift winds of Waikapu”. Winds originate from Waikapu, and end in Kahului Harbor – originally carved by Uncle John M. Lake – first canoe of Hawaiian Canoe Club.

Pahili Kiu—Koa--“Swift winds of Kipahulu” – winds that originates from Kipahulu wrap around the east end of Maui and ends in Kahului Harbor, where the winds of Kokololio and Pahuli Kiu meet – the home of Hawaiian Canoe Club.

Keola—Striker—Named for Marko Kawaiaea who passed in 2004. Marko was deeply loved, admired and respected for his positive and calm manner in and out of the canoe by many paddlers who knew him.

Kekupa‘a—Striker—Named for Kekupa‘a Nae‘ole, one of our former keiki paddlers who has been recognized for his perseverance and positive growth in our Kamali‘i program.

Kamalei—Mirage—Named for Corey Kawaiaea, Marko’s and Margie’s daughter. One of our former keiki paddlers who has grown up among our Hawaiian Canoe Club ‘ohana from “babytime”. Two youth named canoes should ‘play’ together in the ocean.

Mahi‘ai—Mirage—Farmer, gift from Coffees of Hawai‘i.

Kamalalawalu—Mirage--Grandson of Pi‘ilani, succeeded his father, Kiha a Pi‘ilani as mo‘i of Maui. Highly regarded for enlightened leadership, wise government, good resource management, peace and prosperity.

Kahekili—Mirage—Sacred chief of Maui, son of Kekaulike, father of Kamehameha I. He ruled Maui and O‘ahu from 1766 to 1790 after death of Kamehamehanui. A formidable competitor, unbeatable in sports and expert in strategy and leadership as a ruler. He tattooed half of his body black possibly in reference to Kane-hekili “kane, god of thunder”.

Kauwahine—Lightening—First and favored wife of Kahekili. A noted wahine warrior. Kahekili and Kauwahine canoes should always be close together.

Kekaulike—Bradley—Ruling chief of Maui, descendent of Kamalalawalu. With his half sister Keku‘iapoiwanui he fathered Kamehamehanui and Kahekili. He was the highest-born royalty of Maui in the 18th century. His rule was of peace and prosperity with the exception of waging war against his cousin Alapa‘inui in support of the chiefs from Kona & Kohala.

Ha‘alou—Bradley—Wife of Kekaulike, mother of Namahana, grandmother of Ka‘ahumanu, aunt of Kamehameha I. She relayed advice from the wise man Kapoukahi to Kamehameha I to build the heiau at Pu‘ukohola which would result Kamehameha I’s rule over all the islands.

Kaheiheimalie—Bradley--Favored wife of Kamehameha I, above Ka'ahumanu. Married Ulumaheihei Hoapili whom had been entrusted with the bones of Kamehameha I. Started school in Lahaina where reading and writing Bible texts were taught to women of rank and influence.

Keoni—Bradley—Named after our founder Uncle John M. Lake, whom along with his wife Auntie Kealoha, recognized the need of the children in the community to be kept active and started what we now call the Kamali'i Program.

Kealoha--Force 5—Named after Auntie Kealoha Lake, who co-founder our club with Uncle John. She use to tell stories of the first races in Kahului Harbor in flat bottom boats. Such were the "old" days of canoe racing.

Namahana—Racer—Daughter of Kekaulike and Ha'alou. She was sister and wife of Kamehamehanui until his death. Also mother of Ka'ahumanu and Kaheiheimalie by Ke'eaumoku.

Keahiokeola—Racer—N amed for Diane L. Ho, a strong continual driving force who has brought Hawaiian Canoe Club to where it is today. Diane is a woman of great resource, strength, and has a deep pride for Hawaiian Canoe Club.

Ha'ahao—Racer—W ife of Kaiko whom was part of Lihiliho's established household. Also means pride – to cherish with pride –as we should our wa'a.

Keopuolani--OC-6—First wife and niece of Kamehameha I. Born of higher rmana than Kamehameha I She bore his sons Liholiho (Kamehameha II) and Kauikeaouli (Kamehameha III). Partnered with Ka'ahumanu in breaking the tabu of free eating and welcomed the missionaries.

Lei o Ka'ahumanu--Malia—Ka'ahumanu, the favored wife of Kamehameha I. She was the regent of Liholiho (Kamehameha II), She followed Keopuolani in accepting Christianity and played a key role in breaking from the kapu system to embrace Christianity

Moa'ulaiki—Malia—Navigational heiau on Kaho'olawe. Used in ancient times to teach navigators to use the stars and ocean currents to sail the Pacific.

Ka'ulahea—Mirage—The father of Kekaulike. Canoe of King Kekaulike High School.

'Alanui o Lani—Mirage--The place where two winds converge in Upcountry, Maui. Meant to remember those who have gone before us. Canoe of Seabury Hall.

HCC Sponsored Events

Sunday, May 10	Fun in the Sun Regatta
Saturday, July 11	John M. & Kealoha Lake Regatta
Saturday, July 25	‘Aha ‘Aina
Saturday, August 8	Dutchy Kino Distance Race
Saturday, September 19	Pailolo Challenge

2009 Paddling Events

Date	Host	Race
REGATTA SEASON		
5/30/2009	Napili	Dougie Tihada Memorial – Hanaka‘o‘o Beach, Lahaina
6/6/2009	Kahana	Naleieha Regatta – Hanaka‘o‘o Beach, Lahaina
6/13/2009	NKE	John Wilmington III Regatta – Kahului Harbor
6/20/2009	Kihei	Moki Kalanikau Regatta – Ka Lae Pohaku Beach, Kihei
6/27/2009	Lahaina	Keiki O Maui Regatta – Hanaka‘o‘o Beach, Lahaina
7/4/2009		Bye Week Break
7/11/2009	Hawaiian	John M. & Kealoha Lake Regatta – Kahului Harbor
7/18/2009	Wailea	MCHCA Championships – Hanaka‘o‘o Beach, Lahaina
8/1/2009	HCRA	STATE CHAMPIONSHIPS—Hilo, HI
LONG-DISTANCE		
8/8/2009	Hawaiian	Dutchy Kino Memorial
8/15/2009	LUOK	Tag Team
8/22/2009	NKE	Queen Ka‘ahumanu – Maliko to Kahului Harbor
8/23/2009	NKE	Great Kahakuloa – Kahului Harbor to Ka‘anapali
9/5-9/6/09	Kai ‘Opua	Queen Lili‘uokalani – Kona, HI
9/12/2009	Kihei	TBA
9/19/2009	Hawaiian	Pailolo Challenge – Maui to Moloka‘i
9/27/2009	Na Wahine	Na Wahine O Ke Kai – Moloka‘i to O‘ahu
10/11/2009	OHCRA	Moloka‘i Hoe – Moloka‘i to O‘ahu

Resources & Terminology

Websites

HCC: www.hawaiiancanoecub.org
MCHCA: <http://mauipaddlers.homestead.com/mchca.html>
HCRA: www.hcrapaddler.com
OC Paddler: www.ocpaddler.com
Pacific Paddler Magazine: www.pacificpaddler.com
Y2 Kanu: www.y2kanu.com
Windguru: www.windguru.com

Books & Magazines

The Hawaiian Canoe by Tommy Holmes
KANU Culture Magazines
Pacific Paddler magazine
Lawrence Newbold Brown Memorial Library: non-lending library
at HCC

Common Terms & Commands

Wa'a	Canoe
Hoe	Paddle, to paddle
Huli	capsize
Huki	pull
Une	use paddle to change heading of canoe
Kahi	pull water under canoe
Lawa	stop
Makaukau?	Ready?
'Ae	Yes
Hoe hapai	Paddles up
Imua	Forward

Hawai'i Pono'i

Hawai'i pono'i, nana i kou mo'i
Ka lani ali'i, ke ali'i
Makua lani e, Kamehameha e,
Na kaua e pale, e ka 'ihe

Hawai'i Aloha

E Hawai'i e ku'u one hanau e,
Ku'u home kula'iwi nei,
Oli no au i na pono lani ou,
E Hawai'i aloha e.

Chorus:

E hau'oli e na 'opio
O Hawai'i nei,
Oli e! Oli e!

Mai na 'ahe'ahe makani e pa mai nei,
Mau ke aloha
No Hawai'i.

E Ho'i i ke Aloha i Awa 'o Kahului
Song by Ruby Hamili for Kokololio

Kahea:

Aloha mai, aloha mai
A'e e ho'i, i ke aloha i na wai o Kahului

E ho'i i ke aloha i awa o Kahului
I wahi maika'i i kahi Kealoha a me Keone o hui 'ana

Naha 'oia (Kealoha), ka hale o ke aloha
Naha na 'omaka wai a ka lihilihi

E ho'omaopopo 'oe i kuaa meu hou
E ho'owaiho 'oe 'ia nou Kokololio makame i ke hui wa'a o
Hawai'i

Ka'uhane e Kokololio e kala 'ia kuaa a hui hou
I ka malie, keu i ka u'i, o Kealoha, e hemolele 'oe

'Ano lonalona na wa'a i ke kai olu o Kahului

'Auhea wale 'oe a ka makani Kokololio
Like no i ka la'i 'ia mai ka ho'oku'i i ka halawai

I ho'okahi ka umauma ho'okahi ke aloha
E kama 'ia ke aloha a pa'a loko

He aku makou e o mai 'oe
O Kealoha 'ia he inoa
Ha'ina 'ia mai 'ana ka puana
O 'oe, Kealoha 'ia he inoa

He inoa no Kealoha

PAHILI KIU

Oli inoa by Kumu John Keola Lake – July 2002
In memory of his father John M. Lake

Aia ka mahele i uka o Kanehekili
There is a forest uplands above Kanehekili

Kilikiliwainoe ke kappa a Laka
Moistened by Laka's gentle rain

Ku waena o ka lae o Kanemalohema
Standing between the ridge of Kanemalohemo

Hemohemo iho i ka he'e o Kanaloa
(The log was) Loosened into the embrace of Kanaloa

Lanalana ke kai o Kohala pehu
Floating on the sea of Kohala pehu (from 'Ahihi-Kina'u to Huelo)

Pehu 'ea ia i lalo o ka hema
Rising winds from the south shall blow

Kiu aku, kiu mai, Pahili Kiu makani
Blow out, blow in, Pahili Kiu makani

Kipaipai	Kiauau
Kipaipai	Kiauau
Kipaipai	PAHILI KIU

I Ku Mau Mau
by David Malo

Traditional chant used for moving a koa long from the mountain to the sea

Alaka'i: I ku mau mau	Leader: Stand up together
Pane: I ku wa	Response: Stand and shout
Alaka'i: I ku mau mau I ku huluhulu I ka lanawao	Leader: Stand together Haul with all your might Under the mighty trees
Pane: I ku wa	Response: Stand at intervals
Alaka'i: I ku lanawao	Leader: Stand up among the tall forest trees
Pane: I ku wa I ku wa huki I ku wa ko I ku wa a mau A mau ka e ulu E huki e Kulia	Response: Stand at intervals Stand at intervals and pull Stand at intervals and haul Stand in place and haul Haul branches and all Haul now Stand up

A Pae Ka Wa'a
By Pulama Collier for Hawaiian Canoe Club

Alaka'i: E kaupe aku i ka hoe	Leader: Dig your paddle
Pane: A ko mai e	Response: And pull it back
Na kanaka apau: E Kanaloa e E ka moana nui kai hohonu E lana malie ko mau 'ale E Kanaloa e E ka makani nui ikaika e E pa kolonahe malie 'oe E kia'i, e alaka'i, E ho'ona'auao, E ho'oikaia e	Everyone: To Kanaloa we call We call to the very deep ocean Let your waves be calm To Kanaloa we call To the strong winds we call Let your gails be still Guard, lead Enlighten Strengthen
Alaka'i: A pae ka wa'a i ke kula	When the wa'a reaches land
Pane: A lanakila e!	We will be victorious

Contact us:

Hawaiian Kamali'i Inc. dba
Hawaiian Canoe Club
Hoaloha Park, Kahului Harbor, Maui

P.O. Box 5053
Kahului, HI 96733-5153
Phone: 893-2124/Fax: 893-2047
info@hawaiiancanoecub.org

Visit:

www.hawaiiancanoecub.org

